

Smart Home Essentials: From Setup to Advanced Automation

Prepared by

Jose Sanches
Casey Kim

DIYSMARTHOMETECH.COM



CHAPTER 1: INTRODUCTION TO SMART HOME TECHNOLOGY

What is Smart Home Automation?

Smart home automation refers to the integration of various devices in your home that can be controlled remotely or automatically. These devices communicate with each other through a central hub or network, allowing you to manage everything from lighting and climate control to security systems with just a few taps on your smartphone or voice commands.

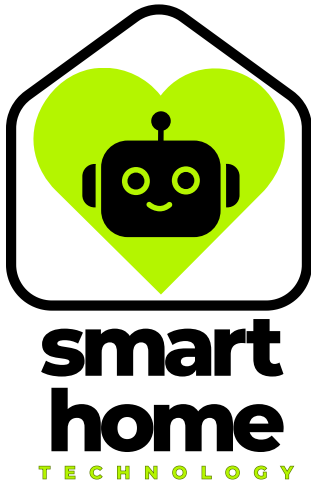
Overview of Popular Smart Home Devices

- **Lighting:** Smart bulbs (e.g., Philips Hue) allow for customizable lighting schemes and remote control.
- **Thermostats:** Devices like the Nest Learning Thermostat adjust temperature based on your habits, saving energy.
- **Security:** Smart cameras (e.g., Ring) and locks (e.g., August Smart Lock) provide real-time monitoring and access control.
- **Voice Assistants:** Amazon Alexa, Google Assistant, and Siri serve as central hubs to control all connected devices.

Why Automate?

- **Convenience:** Imagine coming home to the perfect lighting, temperature, and even your favorite music playing—all without lifting a finger.
- **Energy Savings:** Smart thermostats and energy-efficient devices reduce your utility bills by optimizing when and how they operate.
- **Enhanced Security:** Automation allows for real-time monitoring and alerts, giving you peace of mind whether you're home or away.

Smart home automation not only adds comfort and efficiency to your life but also makes your home safer and more energy-efficient, providing a glimpse into the future of everyday living.



CHAPTER 2: BUILDING A STRONG FOUNDATION

Setting Up a Reliable Wi-Fi Network

Your smart home's success hinges on a strong and stable Wi-Fi network. It's the backbone that keeps all your devices connected and functioning smoothly. If your current Wi-Fi is spotty or struggles to cover your entire home, consider upgrading to a mesh network system. Mesh networks consist of multiple nodes placed throughout your home, ensuring consistent coverage and reducing dead zones.

Key tips for Wi-Fi setup:

- **Router Placement:** Centralize your router to ensure even coverage across your home.
- **Upgrade Frequency:** If your router is more than a few years old, it may be time for an upgrade to handle the increased traffic from smart devices.

Smart Home Hubs and Controllers

A smart home hub serves as the central control unit for all your connected devices, making it easier to manage and automate your home. The choice of a hub depends on the ecosystem you prefer (e.g., Amazon Echo for Alexa, Google Nest Hub for Google Assistant). However, with the rise of new standards like Matter and Thread, it's important to choose a hub that supports these protocols for future-proofing your setup.

- **Matter and Thread Support:** These new standards ensure that your devices from different brands can work seamlessly together. Matter is a universal standard for smart home devices, while Thread is a low-power, reliable networking protocol that enhances communication between devices.
- **Customizability:** Hubs like Samsung SmartThings offer extensive customization options, allowing you to create complex automation routines that make your home truly smart.

By laying a solid foundation with a reliable Wi-Fi network and a versatile hub, you'll ensure that your smart home system is both efficient and scalable, capable of accommodating new devices and technologies as they become available.

CHAPTER 3: SMART LIGHTING SOLUTIONS

Choosing Smart Bulbs and Switches

Smart lighting is one of the easiest and most impactful ways to enhance your home. Whether you're looking to create mood lighting or automate your daily routines, smart bulbs and switches are versatile options.

- **Smart Bulbs:** Popular brands like Philips Hue and LIFX offer bulbs that can change colors, dim, and be controlled remotely via an app or voice commands. They're ideal for those who want flexibility without extensive installation.
- **Smart Switches:** If you prefer to control existing light fixtures, smart switches are a great option. They replace traditional wall switches and allow you to control connected lights via your smartphone or voice assistant. These are especially useful if you want to maintain the use of physical switches while still having smart control.



Creating Ambiance with Smart Lighting

- Beyond basic functionality, smart lighting can dramatically change the ambiance of your home:
- **Color Scenes:** Set up different color scenes for different moods, like warm tones for a cozy evening or cooler tones for focus during work hours.
- **Sync with Music or Movies:** Some systems, like Philips Hue, can sync with your music or TV, changing colors in real-time to enhance your entertainment experience.
- Smart lighting not only brings convenience but also adds a layer of personalization to your home. By carefully choosing and setting up your smart bulbs and switches, you can transform any space to match your needs, whether it's for relaxation, work, or play.

Setting Up and Automating Lighting

Once you've selected your lighting products, the next step is installation and setup, which is typically straightforward, especially with smart bulbs that only need to be screwed into a socket and paired with an app.

- **Installation Tips:**
 - **Smart Bulbs:** Simply replace your traditional bulbs with smart ones and follow the app instructions to connect them to your home's Wi-Fi.
 - **Smart Switches:** For those comfortable with DIY electrical work, replacing a standard switch with a smart switch takes about 15-20 minutes. Just make sure to turn off the power at the circuit breaker before starting.
- **Automation Routines:**
 - Use your hub's app (e.g., Alexa, Google Home) to set up routines. For instance, you can create a "Good Morning" routine where the lights gradually brighten to mimic a sunrise, or an "Away" routine that turns off all lights when you leave home.
 - **Motion Sensors:** Add smart motion sensors to automatically turn lights on when you enter a room and off when you leave, enhancing convenience and energy savings.

CHAPTER 4: CLIMATE CONTROL AND ENERGY EFFICIENCY

Smart Thermostats

Smart thermostats are one of the most effective ways to control your home's climate and reduce energy costs. Devices like the Nest Learning Thermostat or the Ecobee SmartThermostat not only allow you to set and control the temperature remotely but also learn your schedule and preferences over time, automatically adjusting to optimize comfort and efficiency.

- **Installation:** Most smart thermostats are compatible with existing HVAC systems and can be installed with basic tools in under an hour. Many come with step-by-step instructions or even video tutorials.
- **Learning Capabilities:** Smart thermostats adapt to your habits. For example, they can automatically lower the temperature when you're asleep or away and raise it when you're home, ensuring optimal comfort while minimizing energy use.



Energy Monitoring

Beyond temperature control, smart home technology can also help you monitor and reduce your overall energy consumption.

- **Smart Plugs:** These devices allow you to track the energy usage of individual appliances. Brands like TP-Link and Wemo offer smart plugs that connect to your home's Wi-Fi, giving you real-time data on how much energy each device is consuming.
- **Energy-Efficient Automation:** You can automate energy-saving routines, such as turning off lights and electronics when you leave the house or setting appliances to run during off-peak hours to save on electricity costs.

Optimizing Your HVAC System

Integrating smart devices into your HVAC system can further enhance your home's energy efficiency.

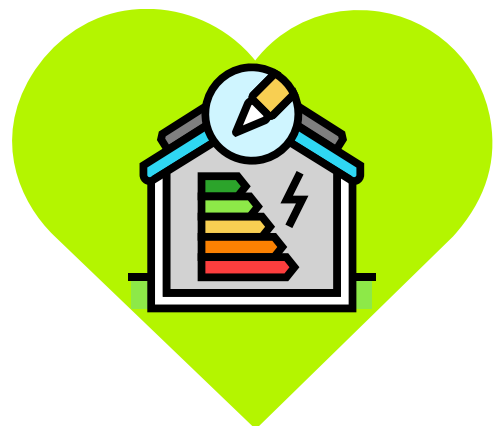
- **Smart Vents:** These can be used to control the airflow in each room, ensuring that heating or cooling is concentrated where it's needed most. By doing so, you can avoid wasting energy on rooms that aren't in use.
- **Zoned Heating and Cooling:** By setting up zones within your home, you can control the temperature in different areas independently. This is especially useful in larger homes where different rooms may require different climate settings.

Environmental Impact and Long-Term Savings

By implementing smart climate control systems, you're not just making your home more comfortable—you're also contributing to a healthier planet. Lower energy consumption means reduced greenhouse gas emissions, and the savings on your utility bills can be significant over time.

- **Return on Investment (ROI):** While there is an initial cost for smart thermostats and other energy-efficient devices, many homeowners see a return on investment within a couple of years through reduced energy bills.

Embracing smart climate control and energy efficiency solutions allows you to maintain a comfortable home environment while also being mindful of your energy use and environmental impact. These technologies are an investment in both your comfort and the future, offering savings and sustainability in equal measure.



CHAPTER 5: HOME SECURITY AND SURVEILLANCE

Smart Cameras and Doorbells

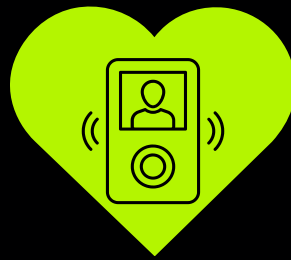
Smart security cameras and video doorbells are essential tools for monitoring your home's safety. Devices like the Ring Video Doorbell or Arlo Pro cameras provide real-time video feeds and motion alerts directly to your smartphone, allowing you to keep an eye on your property from anywhere.

- **Installation:** Most smart cameras and doorbells are designed for easy DIY installation, with wireless models offering the simplest setup. Wired models may require connecting to existing doorbell wiring or installing additional power sources.
- **Features:** Look for features like two-way audio, night vision, and cloud storage options. Some cameras also offer advanced capabilities like facial recognition and package detection, adding extra layers of security.

Building a Comprehensive Security System

Integrating multiple smart security devices into a cohesive system ensures maximum protection for your home. By using a smart hub or a dedicated security app, you can link your cameras, locks, and alarms to work together seamlessly.

- **Automation:** Set up automation rules, such as locking all doors and arming the alarm system when you leave home or disarming the system when you unlock the door.
- **Monitoring Services:** Consider subscribing to professional monitoring services for 24/7 surveillance, where a team of security professionals can respond to alerts on your behalf.



Smart Locks and Alarms

Smart locks and alarm systems provide another layer of security, allowing you to control access to your home remotely and receive alerts if there's an attempted break-in.

- **Smart Locks:** Brands like August and Yale offer smart locks that let you lock or unlock your door from your smartphone. Some models even allow temporary access codes for guests or service providers.
- **Alarm Systems:** Smart alarms, such as those from SimpliSafe or ADT, can be customized to fit your home's layout and specific security needs. These systems often include door/window sensors, motion detectors, and sirens, all controlled via an app.

Privacy Considerations

With increased connectivity comes the need to safeguard your privacy. Ensure that your smart security devices are secured with strong, unique passwords and that you keep firmware up-to-date to protect against vulnerabilities.

- **Data Encryption:** Choose devices that offer end-to-end encryption to protect your video feeds and personal information from unauthorized access.
- **Control Access:** Limit who has access to your security system by managing permissions within your smart home app, and regularly review your device's privacy settings.

Peace of Mind

Investing in smart home security and surveillance provides peace of mind, whether you're at home or away. With the ability to monitor, control, and automate your security devices, you can protect your home more effectively than ever before, all from the convenience of your smartphone. By carefully selecting and integrating smart security devices, you create a robust defense system that keeps your home and loved ones safe from potential threats, while also offering the flexibility and convenience of modern technology.

CHAPTER 6: VOICE ASSISTANTS AND CONTROL

Using Voice Assistants in Your Smart Home

Voice assistants like Amazon Alexa, Google Assistant, and Apple's Siri have revolutionized the way we interact with our smart homes. These AI-driven helpers allow you to control various smart devices with simple voice commands, making home automation more intuitive and accessible.

- **Voice Commands:** With voice assistants, you can perform tasks such as adjusting the thermostat, turning off lights, locking doors, or even playing music by simply speaking a command. For instance, saying, "Alexa, turn off the living room lights," instantly switches off the lights without you needing to lift a finger.
- **Routine Automation:** Beyond individual commands, voice assistants excel in creating routines—a series of actions triggered by a single command. For example, a "Good Morning" routine could turn on the lights, read you the weather forecast, and start brewing your coffee all at once.

Setting Up Voice Assistants

Integrating a voice assistant into your smart home setup is straightforward, but optimizing it for maximum efficiency takes a bit more planning.

- **Choosing the Right Ecosystem:** While Alexa, Google Assistant, and Siri each have their strengths, it's often best to choose one ecosystem and stick with it. This ensures compatibility across your devices and simplifies control.
- **Linking Devices:** Once your voice assistant is set up, the next step is linking all your smart devices to it. This is usually done through the assistant's app, where you can add and organize your devices by room, making them easier to control.
- **Customizing Commands:** Tailor your experience by creating custom commands and routines that fit your lifestyle. Whether it's setting up a movie night mode or ensuring your home is secure when you leave, custom commands make voice control more personal and efficient.

Integration Across Multiple Platforms

In a home where devices from multiple brands coexist, ensuring they all work together can be challenging. This is where Matter and Thread standards play a crucial role.

- **Cross-Platform Compatibility:** Matter and Thread enable different brands and ecosystems to work together seamlessly. For example, you can control a Google Nest thermostat with Amazon Alexa, or have an Apple HomeKit device trigger actions on a device from another ecosystem. This interoperability simplifies managing your smart home and allows for greater flexibility in choosing devices.

Advanced Control and Customization

For those looking to take voice control to the next level, advanced features and integrations offer deeper customization.

- **IFTTT Integration:** "If This Then That" (IFTTT) allows you to create custom automations that go beyond what standard routines offer. For instance, you could set up an automation that turns off all lights when the front door is locked or sends you a text when motion is detected at home.
- **Multi-Room Audio:** Voice assistants also enable multi-room audio control, letting you play music in specific rooms or throughout your entire home with a simple command. This is perfect for entertaining guests or maintaining a consistent ambiance across your home.

Privacy and Security Considerations

While voice assistants add incredible convenience, they also raise concerns about privacy and security.

- **Data Security:** Ensure your voice assistant is set up with strong passwords and that your accounts are protected by two-factor authentication. Regularly review the security settings in your voice assistant's app to keep your data safe.
- **Voice Command Privacy:** Many voice assistants keep recordings of your commands to improve their services. You can manage or delete these recordings within the app settings, giving you control over what data is stored.

CHAPTER 7: ADVANCED AUTOMATION AND INTEGRATION

Creating Custom Routines

Advanced automation is where your smart home truly comes to life. With custom routines, you can automate complex sequences of actions triggered by specific events or commands. For example, a “Good Night” routine could dim the lights, lock the doors, adjust the thermostat, and turn on the security cameras—all with one command.

- **Multi-Device Coordination:** Use your smart hub or voice assistant to create routines that coordinate multiple devices. For instance, when your smart lock engages, your thermostat could lower the temperature, and your lights could switch off.

Smart Home Ecosystems and Matter Integration

Matter and Thread are game-changers for smart home integration, offering unprecedented compatibility across different brands and ecosystems.

- **Universal Compatibility:** Matter ensures that your smart home devices work together, regardless of whether they were made by Google, Apple, Amazon, or another manufacturer. This universal standard simplifies device selection and expands your options for building a cohesive smart home.
- **Future-Proofing:** As Matter becomes more widespread, it will allow for smoother integration of future devices, making your smart home more adaptable to new technologies.



Expanding Your Smart Home System

As your needs evolve, so too can your smart home. The modular nature of smart home technology means you can continually add new devices and integrate them into your existing system.

- **Scaling Up:** Start with essential devices and expand as needed. Add smart blinds for better light control, or integrate a smart irrigation system for your garden. Each new addition enhances the overall functionality and convenience of your home.
- **Stay Updated:** Keep an eye on emerging technologies and software updates to ensure your smart home remains at the cutting edge. With Matter and Thread as the backbone, your system will be ready to incorporate the latest innovations seamlessly.

Integrating Smart Home Devices with Home Automation Systems

For those looking to build a truly sophisticated setup, integrating your smart devices with a home automation system like Home Assistant or Hubitat can offer unmatched control and customization.

- **Home Assistant:** An open-source platform that lets you control all your devices from one interface, Home Assistant allows for complex automations and deep customization, ideal for tech-savvy users who want to tinker and optimize every aspect of their smart home.
- **Hubitat:** Known for its local processing, Hubitat provides fast and reliable automation, without relying on the cloud. It’s perfect for users concerned about privacy or those who need robust automations that work even when the internet is down.

Leveraging Smart Home Scenes and Modes

Smart home scenes and modes are another way to streamline your daily routines. A scene is a pre-set combination of settings across multiple devices that you can activate with a single command, while modes (like “Home,” “Away,” or “Sleep”) adjust your entire smart home system based on your activities.

- **Personalized Scenes:** Create scenes for specific scenarios, such as “Movie Night,” where the lights dim, the shades close, and the TV turns on, all in sync.
- **Modes:** Use modes to automatically adjust your home’s environment based on your presence or the time of day. For example, when you set your home to “Away” mode, your security system could arm, the thermostat could lower, and unnecessary lights could turn off.

CHAPTER 8: TROUBLESHOOTING AND MAINTENANCE

Understanding Common Issues

Even the most well-designed smart home systems can encounter problems. Whether it's connectivity issues, device malfunctions, or software glitches, being prepared to troubleshoot is crucial for maintaining a smooth-running smart home.

- **Connectivity Problems:** One of the most common issues is losing connection to Wi-Fi. If a device is unresponsive, start by checking your Wi-Fi signal strength. Devices too far from the router or obstructed by walls may experience intermittent connectivity. Moving the device closer or using a Wi-Fi extender or mesh network can often resolve these issues.
- **Device Malfunctions:** Sometimes, a smart device may stop responding or act erratically. A simple reboot often fixes these issues. If the problem persists, check for firmware updates, as manufacturers frequently release patches to fix bugs and improve performance.
- **App and Software Glitches:** Occasionally, the app you use to control your smart devices might crash or fail to sync with your devices. Clearing the app's cache, restarting your smartphone, or reinstalling the app can often resolve these problems.

Proactive Maintenance

Regular maintenance can help prevent many common issues and ensure that your smart home system continues to operate smoothly.

- **Firmware Updates:** Smart devices frequently receive firmware updates that can fix bugs, add new features, and improve security. Regularly check your devices for updates through their respective apps and install them as soon as they become available.
- **Device Cleaning:** Physical maintenance is just as important as software updates. Dust and dirt can accumulate on devices, especially those installed outdoors like cameras or doorbells. Regularly clean these devices to prevent obstructions to sensors or lenses.
- **Battery Checks:** Battery-operated devices such as smart locks, sensors, and remote controls should have their batteries checked regularly. Many apps will notify you when a battery is low, but it's good practice to check periodically, especially before leaving for an extended period.



Security Best Practices

Maintaining the security of your smart home is critical, especially given the increasing number of connected devices that could be vulnerable to hacking if not properly secured.

- **Password Management:** Ensure that all your smart home devices, as well as your Wi-Fi network, are protected by strong, unique passwords. Avoid using default passwords, as these are commonly targeted by attackers.
- **Two-Factor Authentication:** Whenever possible, enable two-factor authentication (2FA) on your smart home accounts. This adds an additional layer of security, requiring not just a password but also a code sent to your phone or email.
- **Regular Audits:** Periodically review which devices are connected to your network and the permissions granted to various apps. If you no longer use a device or app, remove its access to your network to reduce potential security risks.



When to Call for Professional Help

While many smart home issues can be resolved with DIY troubleshooting, there are times when it's best to call in a professional.

- **Electrical Issues:** If you suspect a problem with your home's wiring or electrical system, it's crucial to consult a licensed electrician. Attempting to fix electrical issues on your own can be dangerous and may violate local building codes.
- **Complex Installations:** For more complex installations, such as integrating a whole-home automation system or setting up a smart home network that involves multiple hubs and bridges, professional assistance can save time and ensure everything is configured correctly.
- **Persistent Issues:** If a device continues to malfunction despite your best efforts, contacting the manufacturer's customer support or hiring a smart home specialist can provide the expertise needed to diagnose and fix the problem.

Keeping Your Smart Home Running Smoothly

Regular troubleshooting and maintenance are key to ensuring your smart home continues to operate efficiently and securely. By staying proactive—keeping software up to date, monitoring device performance, and following best practices for security—you can minimize disruptions and enjoy a seamless smart home experience. Remember, a well-maintained smart home not only enhances your comfort and convenience but also protects your investment in technology. Whether you're handling issues yourself or knowing when to seek professional help, these strategies will help keep your smart home in top shape.

CHAPTER 9: FUTURE-PROOFING YOUR SMART HOME

Upcoming Technologies

The smart home landscape is evolving rapidly, with new technologies and standards emerging to enhance functionality, interoperability, and user experience. To future-proof your smart home, it's essential to stay informed about these developments and consider how they can be integrated into your existing setup.

- **Matter Protocol:** One of the most significant advancements on the horizon is the widespread adoption of the Matter protocol. Matter aims to unify various smart home ecosystems, allowing devices from different manufacturers to work seamlessly together. This standard is supported by major companies like Apple, Google, Amazon, and Samsung, which means that future devices will be easier to integrate regardless of brand. Adopting Matter-compatible devices will ensure your smart home remains versatile and adaptable as the industry grows.
- **AI and Machine Learning Integration:** Artificial intelligence and machine learning are becoming more integral to smart home systems. Future devices will not only respond to commands but also learn from your habits and preferences to anticipate your needs. For example, AI-driven thermostats might adjust temperatures based on your daily schedule without needing explicit input, or smart lighting could automatically change based on your activity patterns.



- **5G and IoT Expansion:** The rollout of 5G technology is set to revolutionize the Internet of Things (IoT), enabling faster and more reliable connections for smart home devices. With 5G, devices can communicate more efficiently, reducing latency and improving the performance of time-sensitive applications like security systems and real-time video streaming. As more devices become IoT-enabled, the potential for smart home automation will expand, offering new opportunities to integrate everything from home appliances to wearable devices.
- **Augmented Reality (AR) and Smart Homes:** Augmented reality is an emerging trend that could soon play a role in smart home management. Imagine using AR glasses to visualize your smart home network, see which devices are connected, and troubleshoot issues in real-time. This technology could also enhance how you interact with your home, allowing you to control devices with gestures or see overlays of information about your surroundings.
- **Sustainability and Energy Efficiency:** As environmental concerns grow, future smart home devices will likely place a greater emphasis on sustainability. Expect to see more energy-efficient products, smart grid integrations, and systems designed to monitor and reduce energy consumption. This includes advancements in solar power integration, smart water management, and devices that track and optimize your home's overall environmental footprint.

EXPANDING YOUR SYSTEM

As you future-proof your smart home, it's crucial to think about how you can expand and scale your system over time. Whether you're adding new devices or upgrading existing ones, planning for growth will help you avoid compatibility issues and ensure a seamless smart home experience.

Modular Upgrades

Start by adopting a modular approach to your smart home setup. Choose systems that allow for easy upgrades or expansions, such as hubs that can accommodate additional devices or systems with interchangeable components. For example, if you're setting up smart lighting, opt for a platform that supports a wide range of bulbs, switches, and sensors, so you can easily add more as needed.

Network Scalability

As you add more devices to your smart home, your network will need to handle increased traffic. Ensure your Wi-Fi network is scalable, perhaps by investing in a mesh network that can be expanded with additional nodes. This will help maintain strong connectivity throughout your home, even as the number of connected devices grows.

Interoperability and Cross-Platform Integration

Future-proofing also means ensuring that your devices can work together seamlessly. As you expand your system, focus on adding devices that support Matter or other open standards, allowing for greater interoperability across different platforms. This will make it easier to integrate new technologies as they emerge and prevent your smart home from becoming fragmented.

In conclusion, future-proofing your smart home involves staying ahead of technological trends, planning for expansion, and ensuring your system remains flexible and secure. By focusing on modular upgrades, network scalability, interoperability, and data management, you can build a smart home that adapts to new innovations and continues to serve your needs well into the future.

Automation and AI Enhancements

As your system grows, consider how you can enhance automation and AI integration. Look for devices that offer advanced automation features or AI-driven insights. For example, upgrading to a more sophisticated smart thermostat might provide deeper learning capabilities, allowing it to predict and adjust based on subtle patterns in your behavior.

Data Management and Privacy

As your smart home expands, the amount of data generated by your devices will increase. It's important to have a plan for managing and securing this data. Consider investing in a smart home hub or service that prioritizes data privacy and offers robust encryption. Additionally, regularly review your devices' privacy settings and ensure that any cloud services you use are secure and compliant with privacy regulations.

Preparing for Future Innovations

Finally, keep an eye on emerging technologies that might complement or enhance your smart home. This includes everything from smart appliances to innovative new sensors or interfaces. By staying informed and open to new possibilities, you can continue to evolve your smart home, making it more responsive, intuitive, and aligned with your lifestyle.

